

COUNTY NAME	STATE PROJ. NO.	SECTION NO.
GRAYSON	12	A

COMMONWEALTH OF KENTUCKY
DEPARTMENT OF
STATE ROADS & HIGHWAYS

PLAN AND PROFILE OF PROPOSED
STATE HIGHWAY

STATE PROJ. NO. 12 SECA

GRAYSON COUNTY

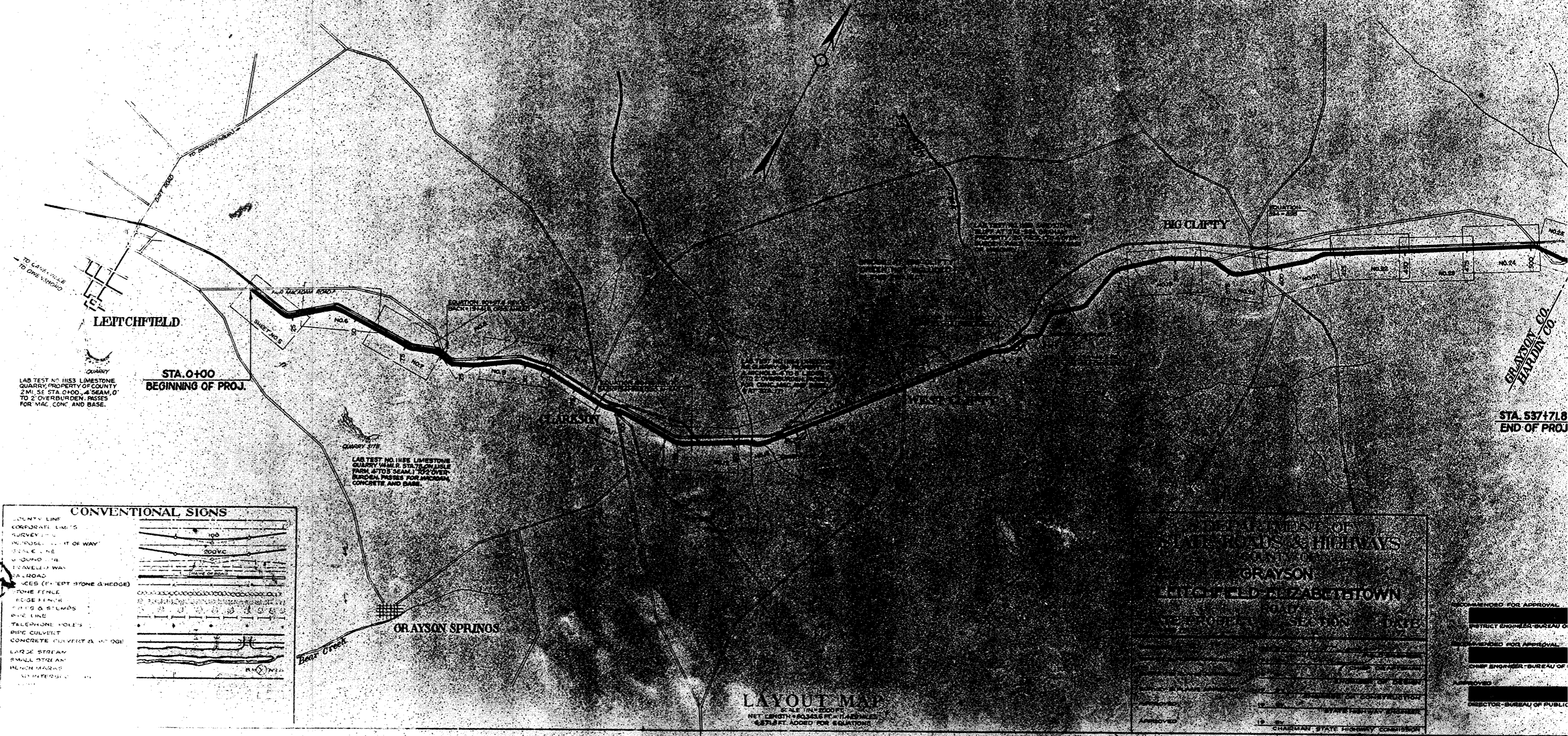
FROM LEITCHFIELD TO 666.8 FT BEYOND HARDIN CO. LINE

SCALES
PLAN 1"=1000 FT
PROFILE 1"=100 FT
CROSS SECTIONS 1"=20 FT

INDEX OF SHEETS

TITLE SHEET	STANDARD TYPICAL SECTIONS SHEET	TYPICAL SECTION & SUMMARY OF QUANTITIES SHEET	STANDARD SHEET
PLAN-PROFILE	STA. 0+000 TO STA. 26+000		
	26+000 27+273		
	27+273 30+000		
	30+000 60+000		
	60+000 90+18.4		
	90+18.4 120+000		
	120+000 154+000		
	154+000 179+000		
	179+000 209+000		
	209+000 240+000		
	240+000 270+490		
	270+490 301+000		
	301+000 332+000		
	332+000 361+000		
	361+000 393+63.7		
	393+63.7 419+66.1		
	419+66.1 451+000		
	451+000 476+08.8		
	476+08.8 511+53.2		
	511+53.2 537+71.8		
26-27	REFERENCE SHEETS		
28-31	CROSS SECTION SHEETS		
32	BRIDGE SHEETS		

ATTACH STANDARD SHEET ADD. SET NO. 62



LAB TEST NO. 1153 Limestone Quarry, Property of County 2 Mi. SE STA. 0+00, 4 SEAM, 0' TO 2' OVERBURDEN, PASSES FOR MAC. CONC. AND BASE.

LAB TEST NO. 1155 Limestone Quarry, 1/2 Mi. SE STA. 30+00, 1 SEAM, 1' TO 2' OVERBURDEN, PASSES FOR MACADAM, CONCRETE AND BASE.

CONVENTIONAL SIGNS

COUNTY LINE	
CORPORATE LIMITS	
SURVEY LINE	
INDUSTRIAL LIMIT OF WAY	
RAILROAD LINE	
BOUNDARY LINE	
TRAVELING WAY	
PAVED ROAD	
ROADS (EXCEPT BYONE & HEDGE)	
STONE FENCE	
WOOD FENCE	
POSTS & STUMPS	
PHONE LINE	
TELEPHONE POLES	
PIPE CULVERT	
CONCRETE CULVERT & BRIDGE	
LARGE STREAM	
SMALL STREAM	
RENCH MARKS	
ANY INTERSECTION	

DEPARTMENT OF STATE ROADS & HIGHWAYS
GRAYSON COUNTY
LEITCHFIELD TO ZABERTTOWN ROAD
SECTION NO. 12 SECA

APPROVED: _____ DATE: _____
APPROVED: _____ DATE: _____
APPROVED: _____ DATE: _____
APPROVED: _____ DATE: _____
APPROVED: _____ DATE: _____

RECOMMENDED FOR APPROVAL: _____
DISTRICT ENGINEER - BUREAU OF PUBLIC WORKS

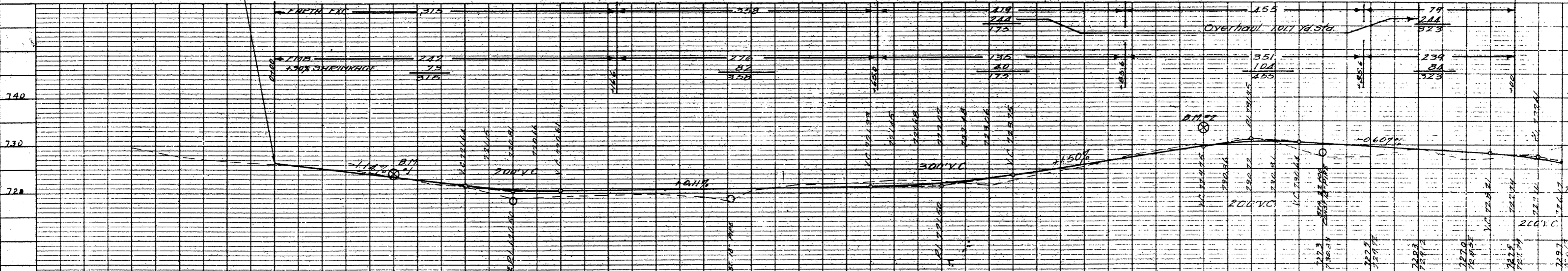
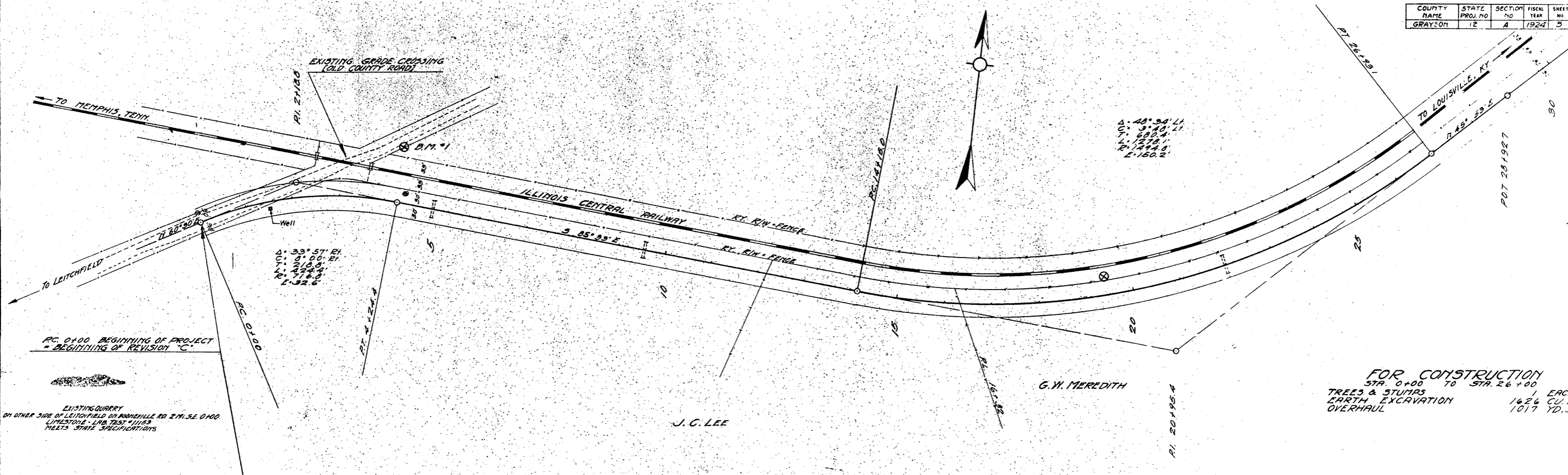
RECOMMENDED FOR APPROVAL: _____
CHIEF ENGINEER - BUREAU OF PUBLIC WORKS

APPROVED: _____
DIRECTOR - BUREAU OF PUBLIC WORKS

CHAIRMAN STATE HIGHWAY COMMISSION

LAYOUT MAP
SCALE: 1"=1000 FT
NET LENGTH 666.8 FT, 11.4 SEAM, 667.1 FT ADDED FOR EQUATIONS

COUNTY NAME	STATE PROJ. NO.	SECTION NO.	FISCAL YEAR	SHEET NO.
GRAYSON	12	A	1924	5



STATION	ELEVATION	REMARKS
0+00	725.0	PC 0+00 BEGINNING OF PROJECT
0+10	724.5	
0+20	724.0	
0+30	723.5	
0+40	723.0	
0+50	722.5	
0+60	722.0	
0+70	721.5	
0+80	721.0	
0+90	720.5	
1+00	720.0	BM #1
1+10	720.5	
1+20	721.0	
1+30	721.5	
1+40	722.0	
1+50	722.5	
1+60	723.0	
1+70	723.5	
1+80	724.0	
1+90	724.5	
2+00	725.0	
2+10	725.5	
2+20	726.0	
2+30	726.5	
2+40	727.0	
2+50	727.5	
2+60	728.0	
2+70	728.5	
2+80	729.0	
2+90	729.5	
3+00	730.0	
3+10	730.5	
3+20	731.0	
3+30	731.5	
3+40	732.0	
3+50	732.5	
3+60	733.0	
3+70	733.5	
3+80	734.0	
3+90	734.5	
4+00	735.0	
4+10	735.5	
4+20	736.0	
4+30	736.5	
4+40	737.0	
4+50	737.5	
4+60	738.0	
4+70	738.5	
4+80	739.0	
4+90	739.5	
5+00	740.0	
5+10	740.5	
5+20	741.0	
5+30	741.5	
5+40	742.0	
5+50	742.5	
5+60	743.0	
5+70	743.5	
5+80	744.0	
5+90	744.5	
6+00	745.0	
6+10	745.5	
6+20	746.0	
6+30	746.5	
6+40	747.0	
6+50	747.5	
6+60	748.0	
6+70	748.5	
6+80	749.0	
6+90	749.5	
7+00	750.0	
7+10	750.5	
7+20	751.0	
7+30	751.5	
7+40	752.0	
7+50	752.5	
7+60	753.0	
7+70	753.5	
7+80	754.0	
7+90	754.5	
8+00	755.0	
8+10	755.5	
8+20	756.0	
8+30	756.5	
8+40	757.0	
8+50	757.5	
8+60	758.0	
8+70	758.5	
8+80	759.0	
8+90	759.5	
9+00	760.0	
9+10	760.5	
9+20	761.0	
9+30	761.5	
9+40	762.0	
9+50	762.5	
9+60	763.0	
9+70	763.5	
9+80	764.0	
9+90	764.5	
10+00	765.0	
10+10	765.5	
10+20	766.0	
10+30	766.5	
10+40	767.0	
10+50	767.5	
10+60	768.0	
10+70	768.5	
10+80	769.0	
10+90	769.5	
11+00	770.0	
11+10	770.5	
11+20	771.0	
11+30	771.5	
11+40	772.0	
11+50	772.5	
11+60	773.0	
11+70	773.5	
11+80	774.0	
11+90	774.5	
12+00	775.0	
12+10	775.5	
12+20	776.0	
12+30	776.5	
12+40	777.0	
12+50	777.5	
12+60	778.0	
12+70	778.5	
12+80	779.0	
12+90	779.5	
13+00	780.0	
13+10	780.5	
13+20	781.0	
13+30	781.5	
13+40	782.0	
13+50	782.5	
13+60	783.0	
13+70	783.5	
13+80	784.0	
13+90	784.5	
14+00	785.0	
14+10	785.5	
14+20	786.0	
14+30	786.5	
14+40	787.0	
14+50	787.5	
14+60	788.0	
14+70	788.5	
14+80	789.0	
14+90	789.5	
15+00	790.0	
15+10	790.5	
15+20	791.0	
15+30	791.5	
15+40	792.0	
15+50	792.5	
15+60	793.0	
15+70	793.5	
15+80	794.0	
15+90	794.5	
16+00	795.0	
16+10	795.5	
16+20	796.0	
16+30	796.5	
16+40	797.0	
16+50	797.5	
16+60	798.0	
16+70	798.5	
16+80	799.0	
16+90	799.5	
17+00	800.0	
17+10	800.5	
17+20	801.0	
17+30	801.5	
17+40	802.0	
17+50	802.5	
17+60	803.0	
17+70	803.5	
17+80	804.0	
17+90	804.5	
18+00	805.0	
18+10	805.5	
18+20	806.0	
18+30	806.5	
18+40	807.0	
18+50	807.5	
18+60	808.0	
18+70	808.5	
18+80	809.0	
18+90	809.5	
19+00	810.0	
19+10	810.5	
19+20	811.0	
19+30	811.5	
19+40	812.0	
19+50	812.5	
19+60	813.0	
19+70	813.5	
19+80	814.0	
19+90	814.5	
20+00	815.0	
20+10	815.5	
20+20	816.0	
20+30	816.5	
20+40	817.0	
20+50	817.5	
20+60	818.0	
20+70	818.5	
20+80	819.0	
20+90	819.5	
21+00	820.0	
21+10	820.5	
21+20	821.0	
21+30	821.5	
21+40	822.0	
21+50	822.5	
21+60	823.0	
21+70	823.5	
21+80	824.0	
21+90	824.5	
22+00	825.0	
22+10	825.5	
22+20	826.0	
22+30	826.5	
22+40	827.0	
22+50	827.5	
22+60	828.0	
22+70	828.5	
22+80	829.0	
22+90	829.5	
23+00	830.0	
23+10	830.5	
23+20	831.0	
23+30	831.5	
23+40	832.0	
23+50	832.5	
23+60	833.0	
23+70	833.5	
23+80	834.0	
23+90	834.5	
24+00	835.0	
24+10	835.5	
24+20	836.0	
24+30	836.5	
24+40	837.0	
24+50	837.5	
24+60	838.0	
24+70	838.5	
24+80	839.0	
24+90	839.5	
25+00	840.0	
25+10	840.5	
25+20	841.0	
25+30	841.5	
25+40	842.0	
25+50	842.5	
25+60	843.0	
25+70	843.5	
25+80	844.0	
25+90	844.5	
26+00	845.0	

FOR CONSTRUCTION
 STA. 0+00 TO STA. 26+00
 TREES & STUMPS EACH
 EARTH EXCAVATION 1626 CU. YD.
 OVERHAUL 1017 YD. 5'

DEPARTMENT OF STATE ROADS & HIGHWAY
 COUNTY OF GRAYSON
 LEITCHFIELD - ELIZABETHTOWN ROAD

STATE PROJECT No 12 SECTION A DATE 1924

SURVEYED	1924	BY	A. J. JACKSON
PLANS PREPARED AND CHK'D	1927	BY	(Signature)
SURVEY AND PLANS CHK'D	1927	BY	(Signature)
RECOMM. FOR APPROVAL	1927	BY	(Signature)
RECOMM. FOR APPROVAL	1927	BY	(Signature)
APPROVED	1927	BY	(Signature)
APPROVED	1927	BY	(Signature)

COUNTY NAME	STATE	SECTION NO.	FISCAL YEAR	SHEET NO.	TOTAL SHEETS
GRAYSON	12	A	1924	7	91

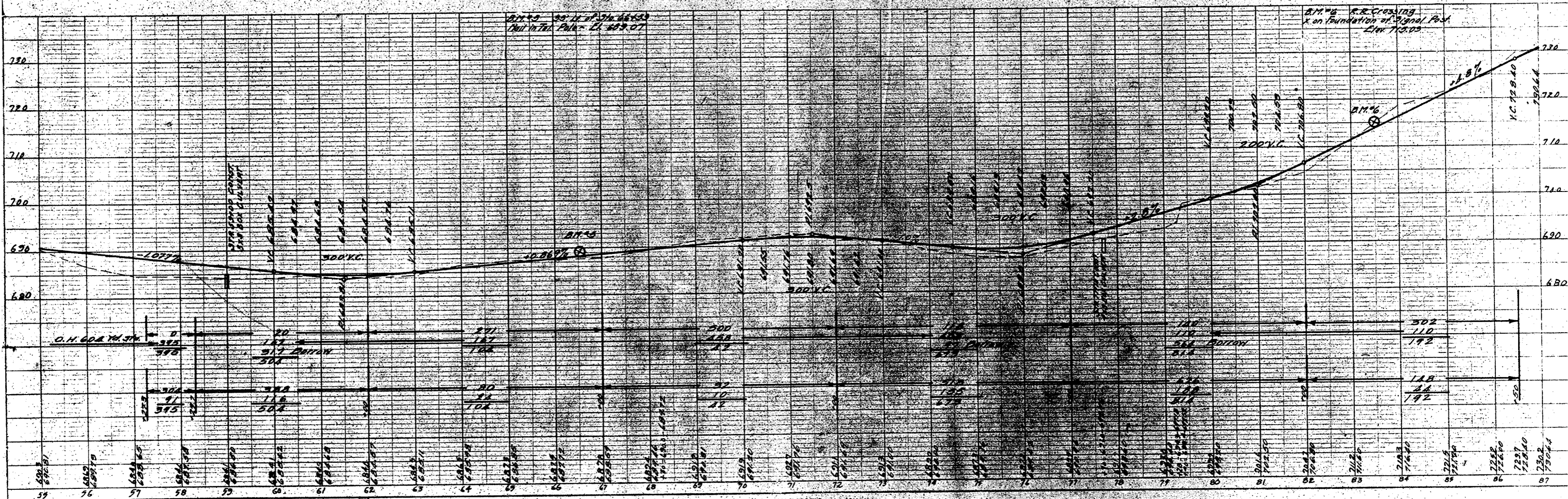
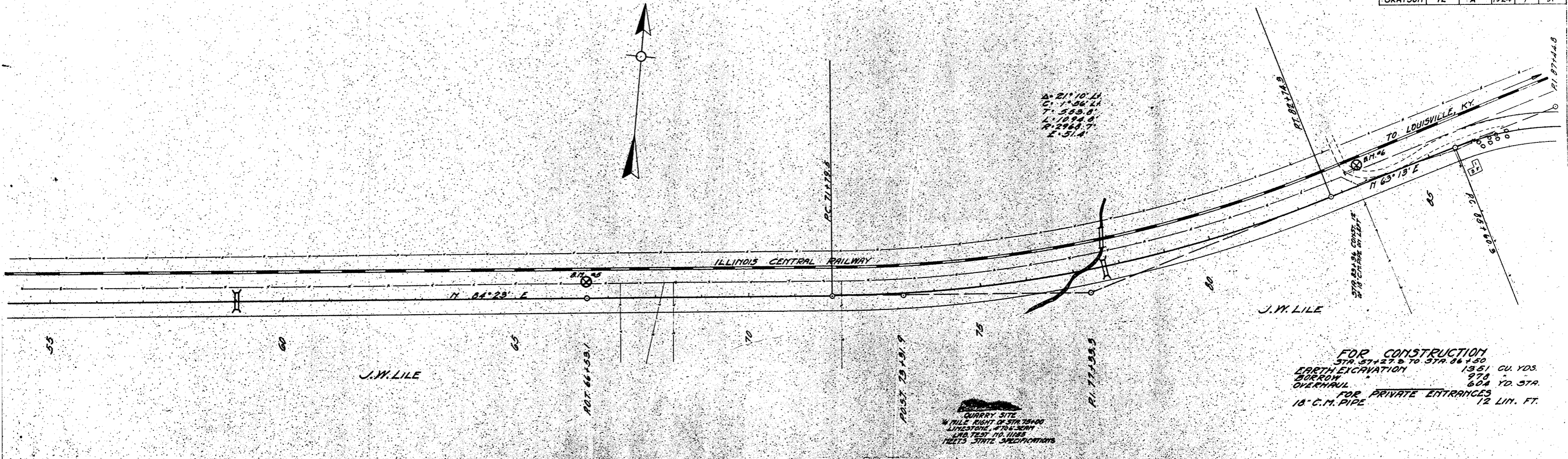
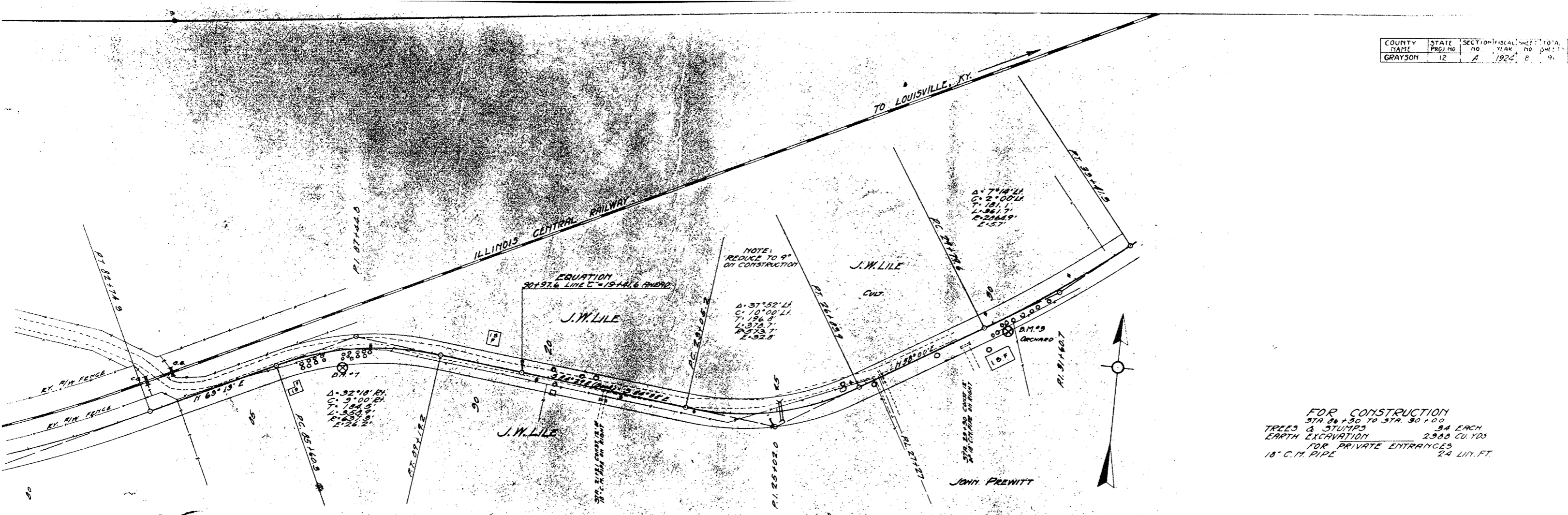
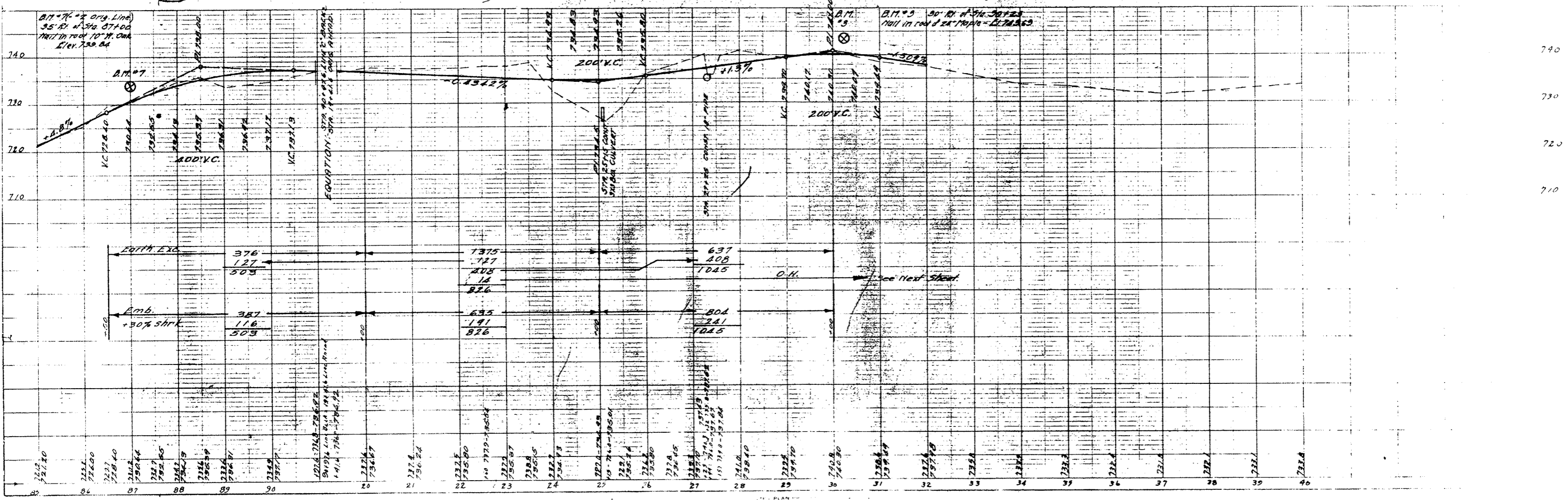


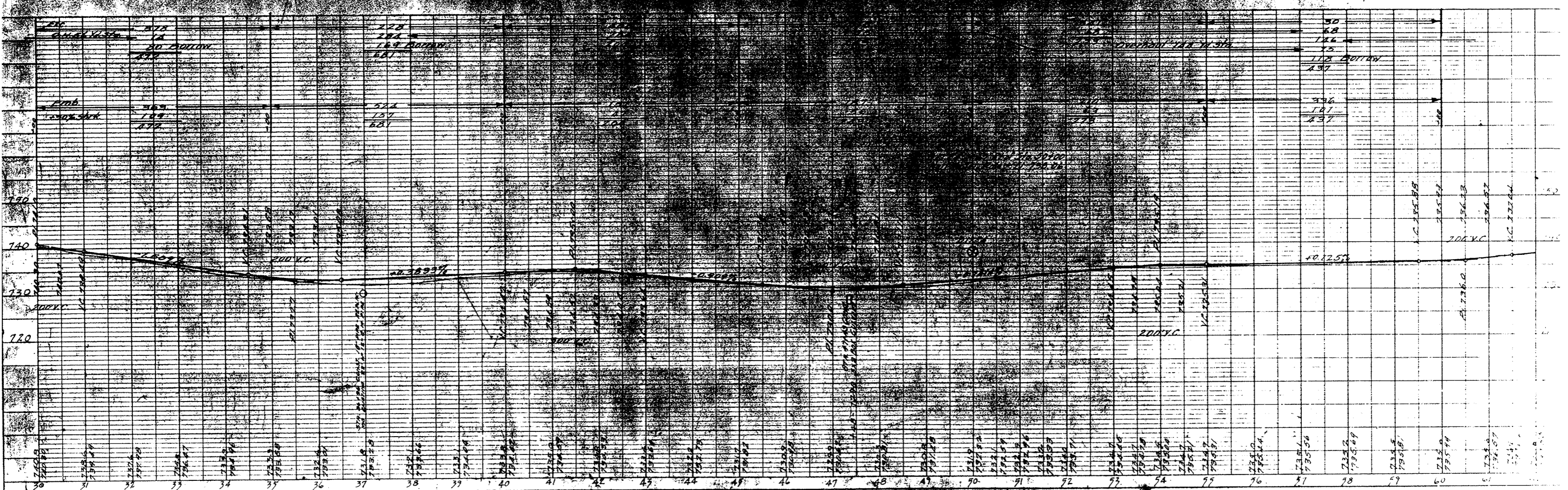
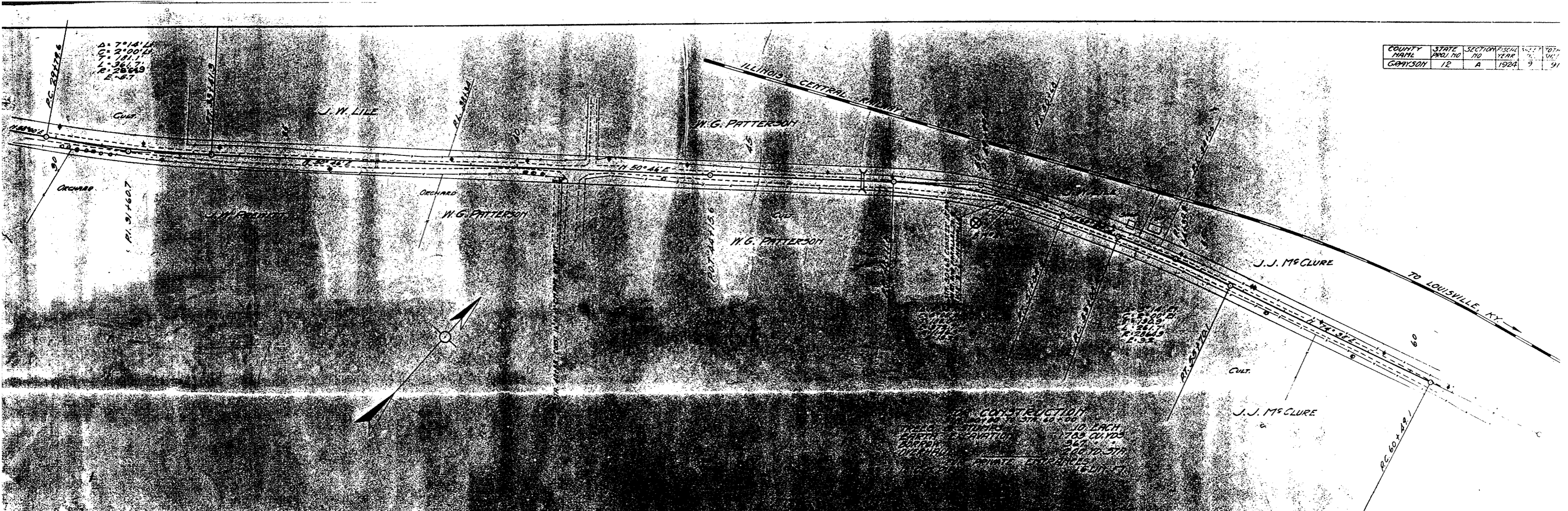
PLATE 1 PLAN-PROFILE



FOR CONSTRUCTION
 STA 86+50 TO STA 90+00
 TREES & STUMPS 34 EACH
 EARTH EXCAVATION 2988 CU. YDS
 FOR PRIVATE ENTRANCES
 18" C.M. PIPE 24 LIN. FT.



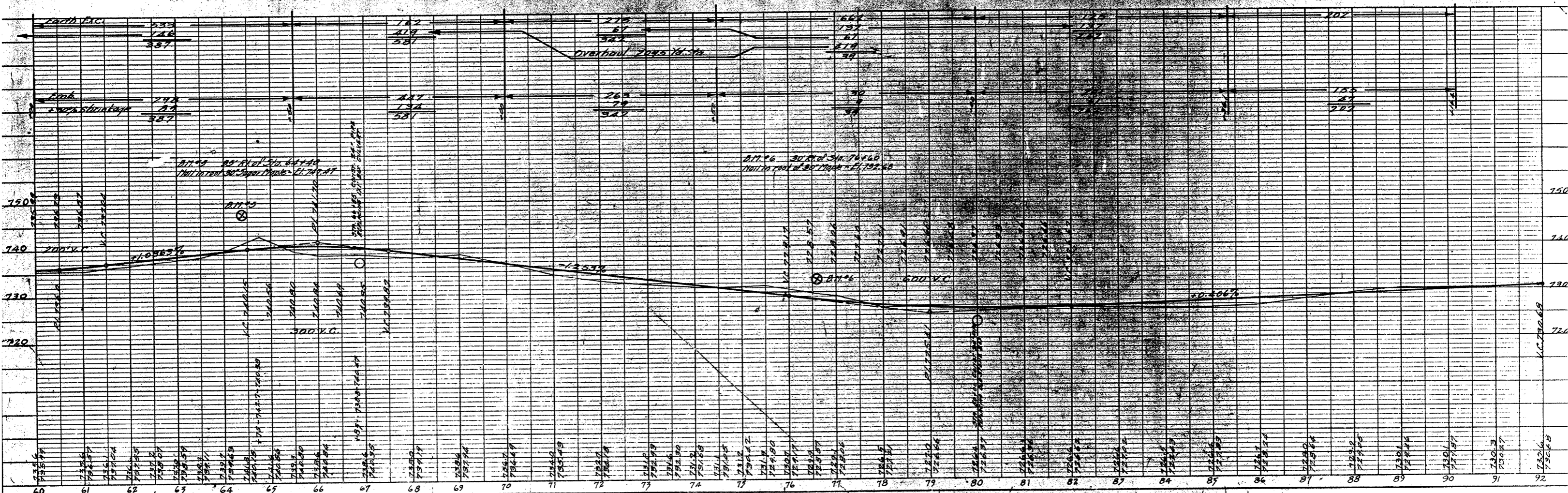
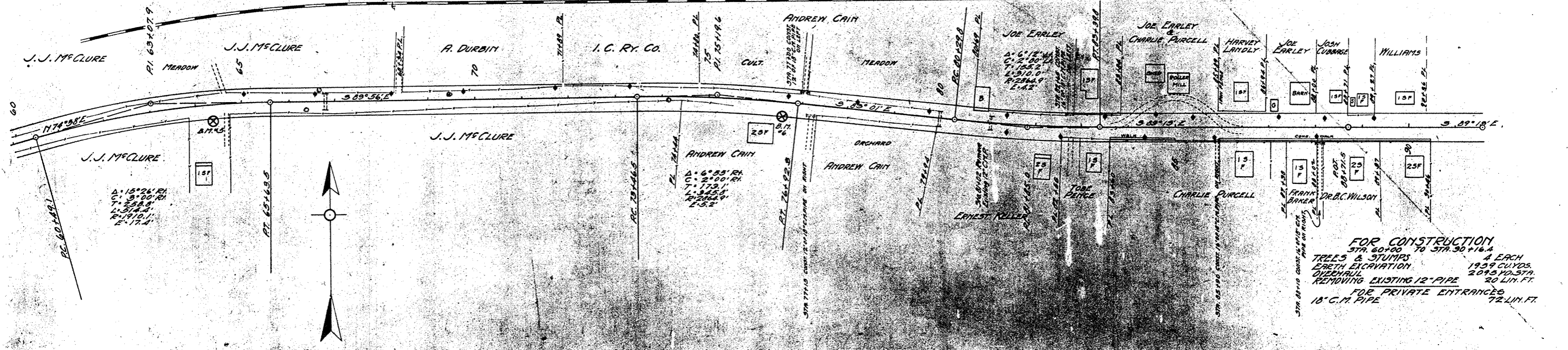
COUNTY NAME	STATE	SECTION	RANGE	TOWNSHIP
GRAYSON	12	A	1924	9 21



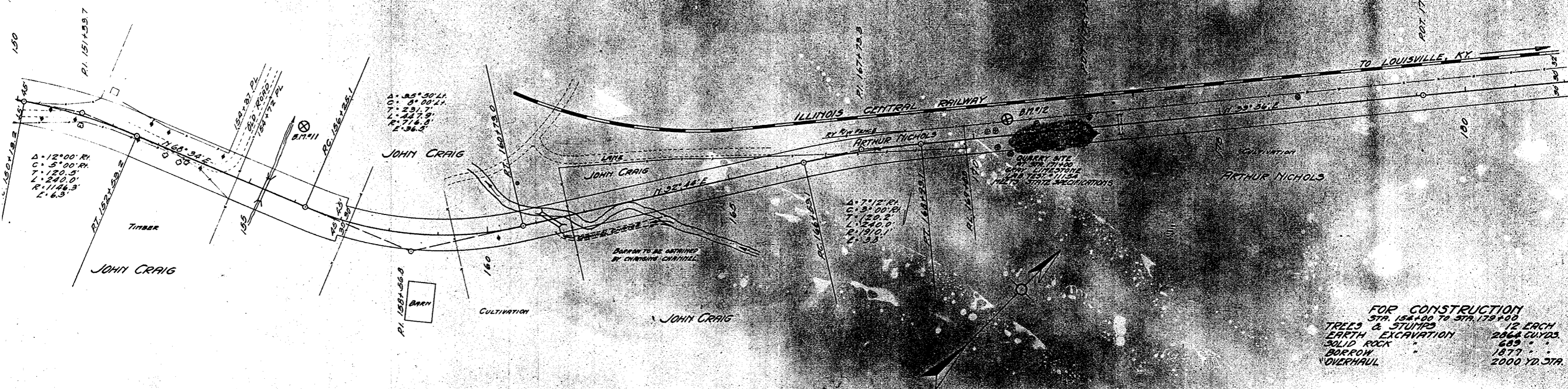
CLARKSON, KY.

ILLINOIS CENTRAL RAILWAY

TO LOUISVILLE, KY. →



COUNTY NAME	STATE	SECTION NO.	FISCAL YEAR	SHEET NO.	TOTAL SHEETS
GRAYSON	12	A	1924	13	31



FOR CONSTRUCTION
 STA. 154+00 TO STA. 179+00
TREES & STUMPS 12 EACH
EARTH EXCAVATION 2066 CU YDS
SOLID ROCK 689 " "
BORROW 1877 " "
OVERHAUL 2000 YD STA.

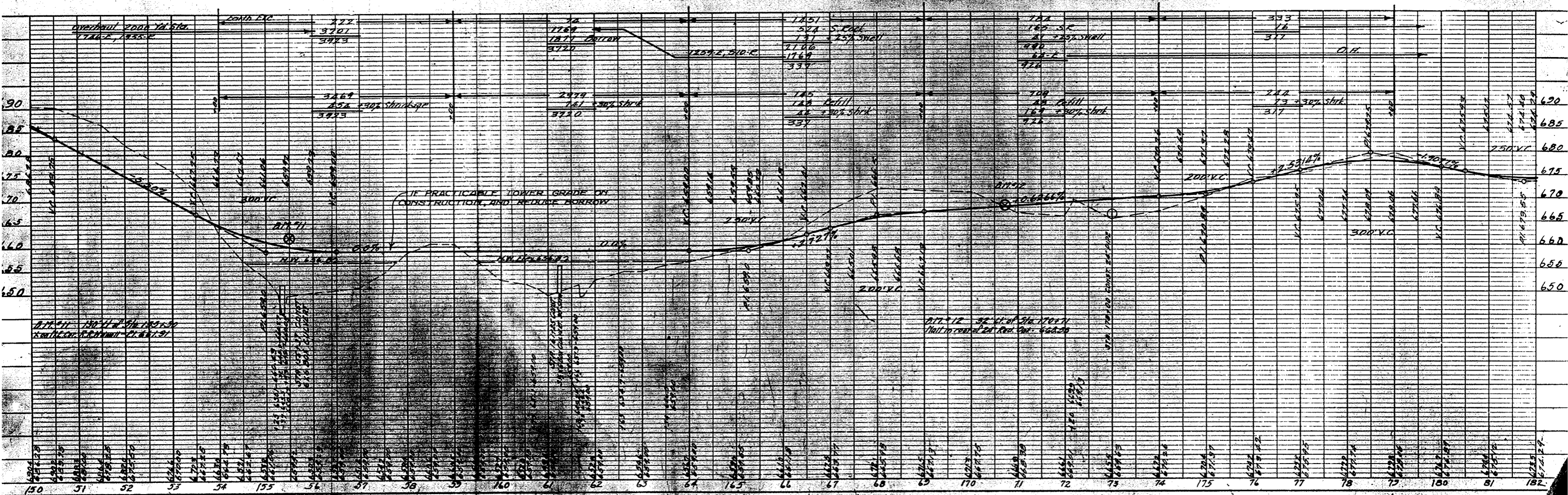
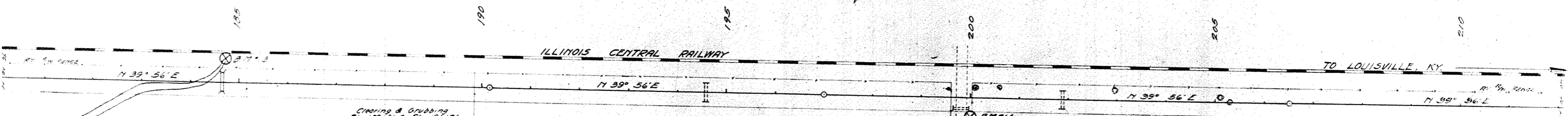
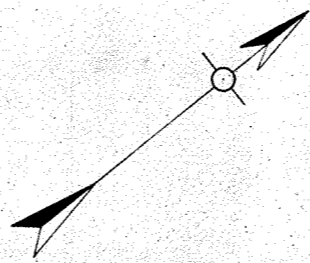


PLATE 1 - PLAN-PROFILE C.P. & M.C. STANBRO

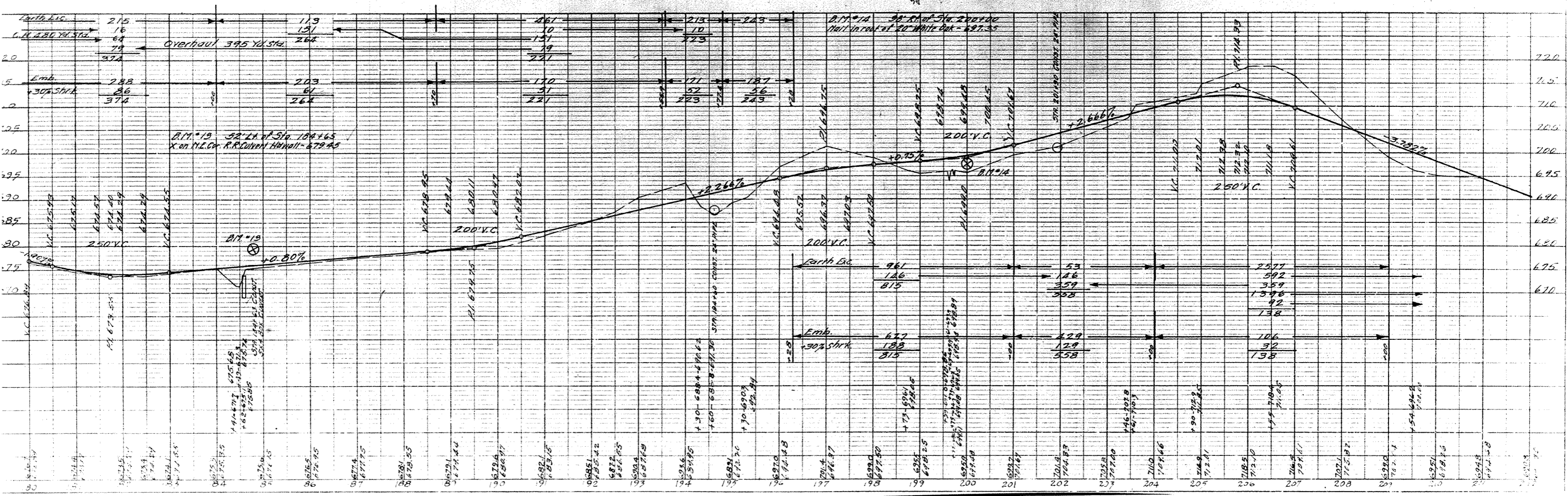


ARTHUR NICHOLS

ANTHONY MUDD

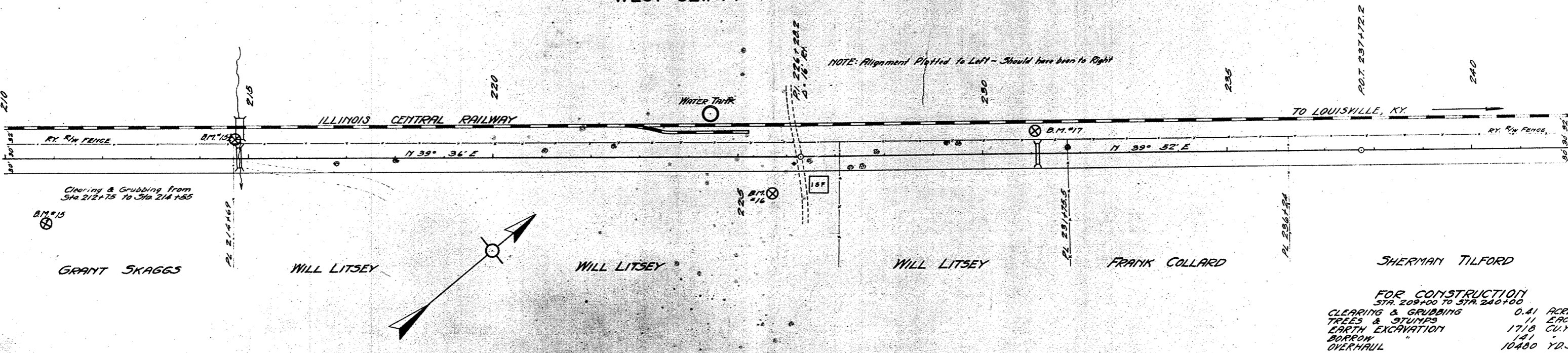
GRANT SKAGGS

FOR CONSTRUCTION
 STA. 178+00 TO STA. 210+00
 CLEARING & GRUBBING 0.3 ACRES
 TREES & STUMPS 5 2/3 AC.
 EARTH ELEVATION 40.36 CU. YDS.
 OVERHAUL 31.5 1/2 MIN.



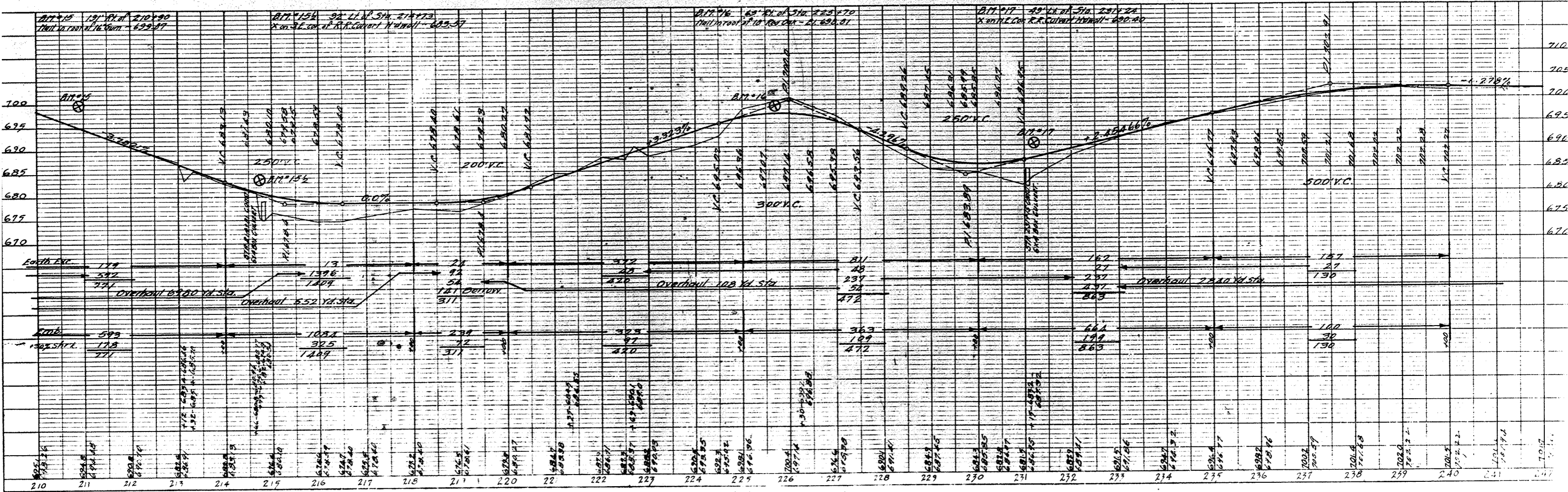
WEST CLIFTY

NOTE: Alignment Plotted to Left - Should have been to Right



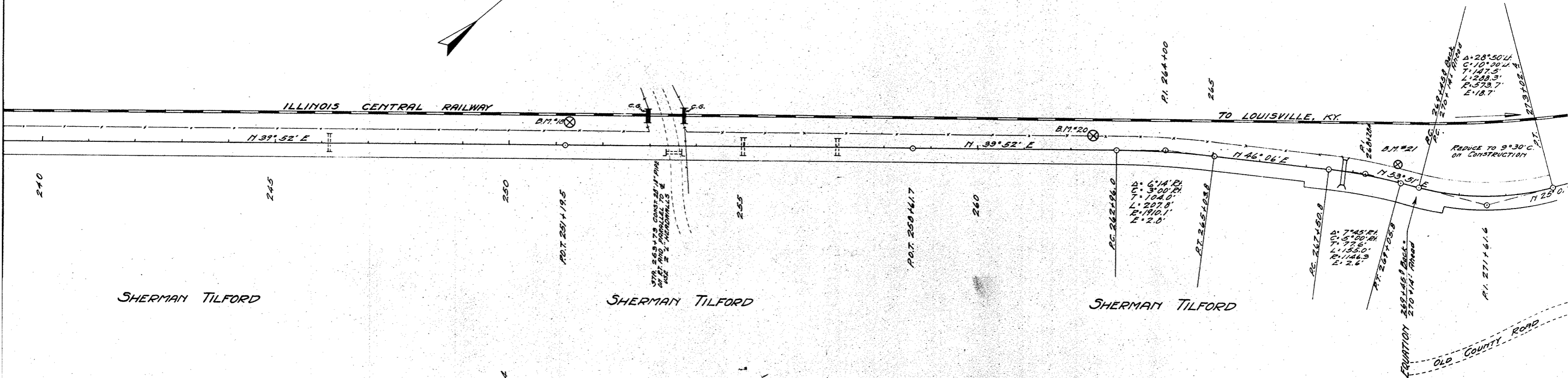
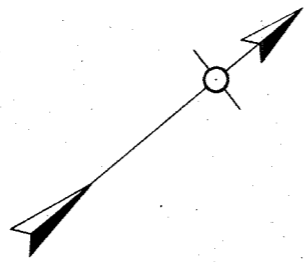
FOR CONSTRUCTION
STA. 209+00 TO STA. 240+00

CLEARING & GRUBBING	0.41 ACRES
TREES & STUMPS	11 EACH
EARTH EXCAVATION	1718 CU.YDS.
BORROW	141
OVERHAUL	10480 YD.STA.

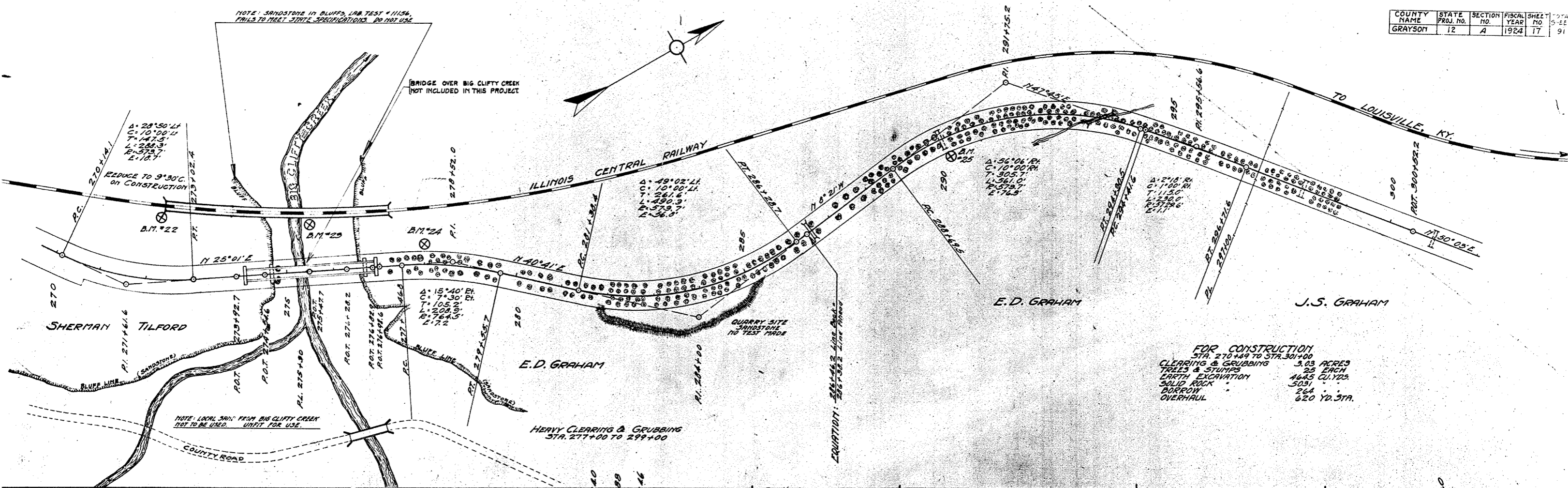


FOR CONSTRUCTION
 STA. 240+00 TO STA. 270+00
 EARTH EXCAVATION 4811 CU.YDS.
 BORROW 2376
 OVERHAUL 1184 YD. STA.

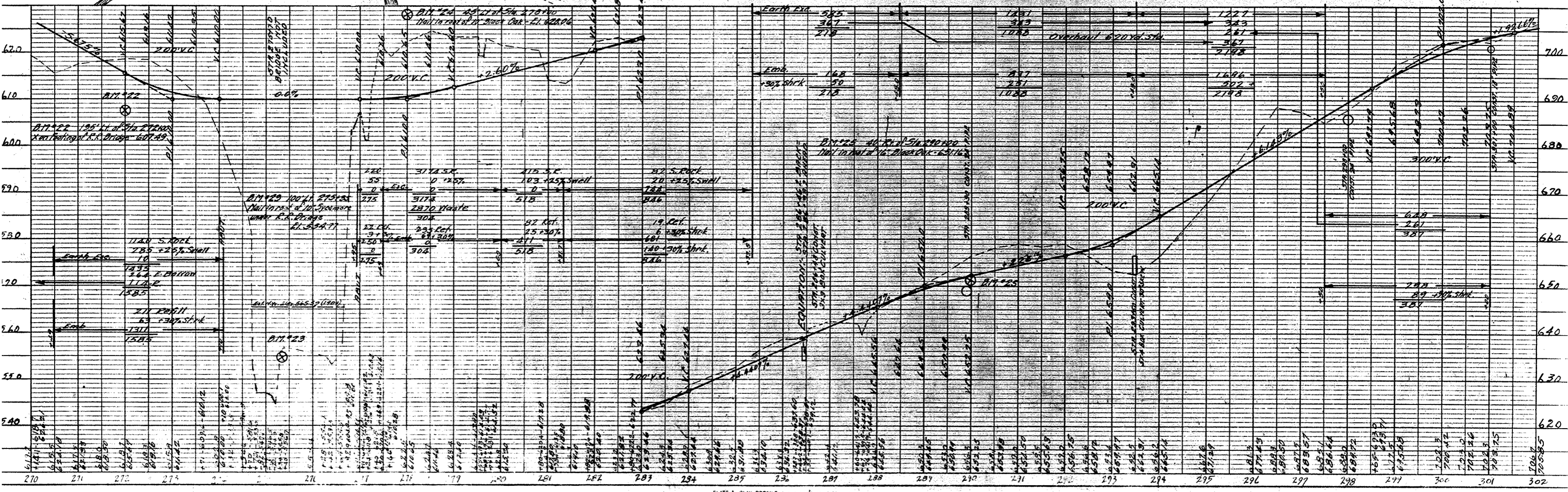
COUNTY NAME	STATE	SECTION NO.	FISCAL YEAR
GRAYSON	12	A	1924

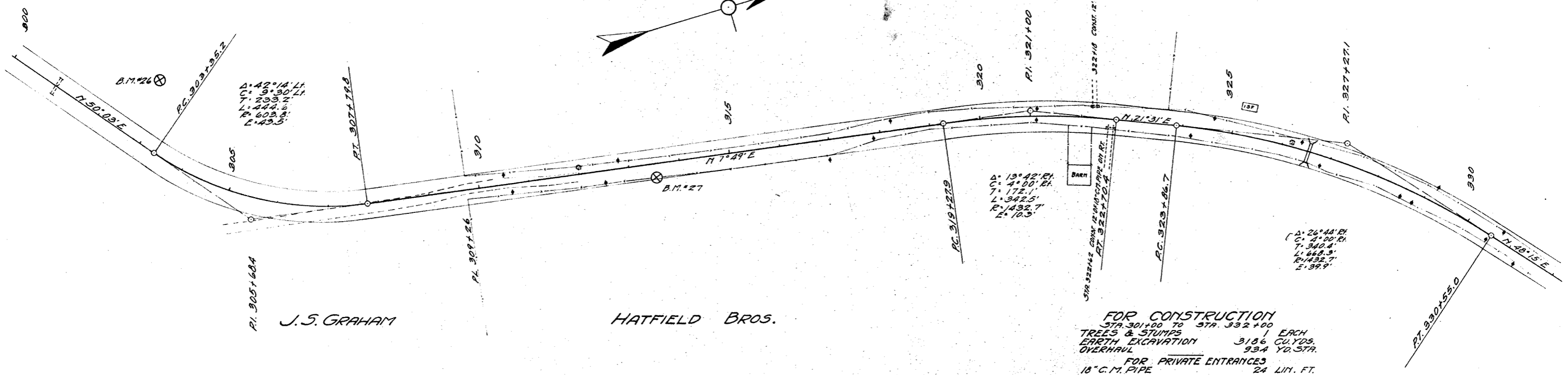
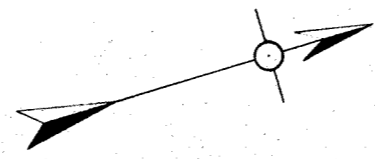


NOTE: SANDSTONE IN BLUFFS, LAB TEST #11154, FAILS TO MEET STATE SPECIFICATIONS. DO NOT USE.

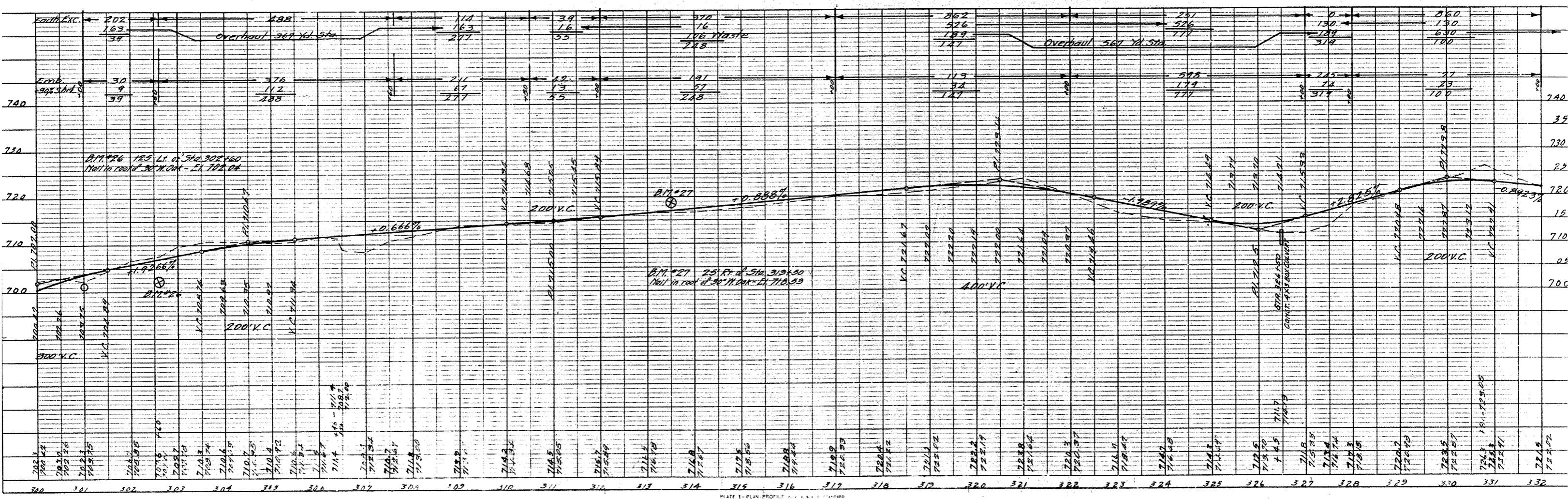


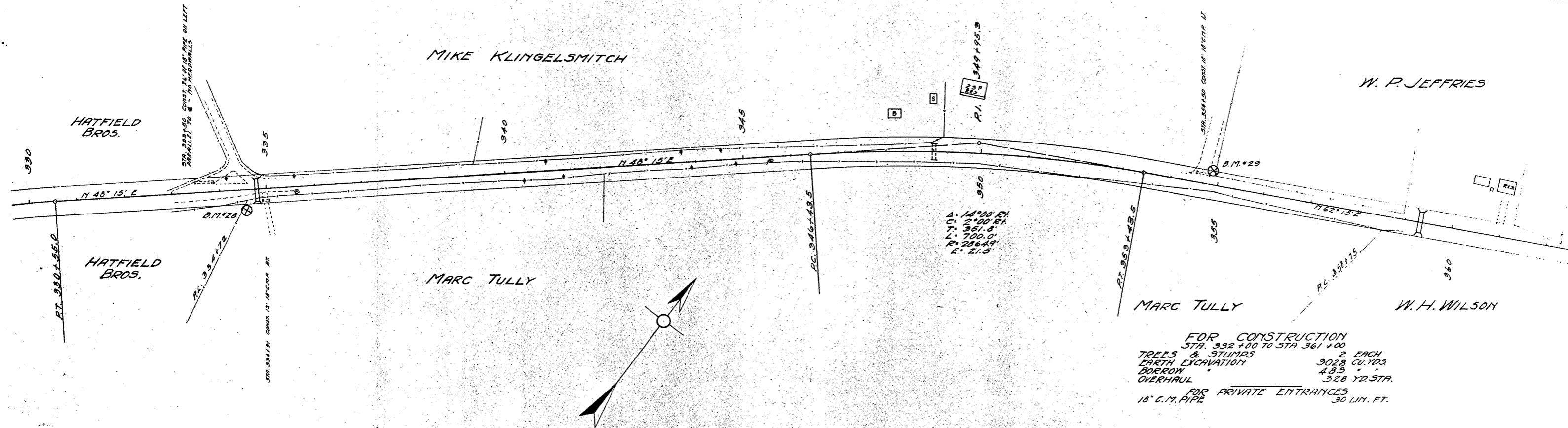
FOR CONSTRUCTION
 STA. 270+00 TO STA. 301+00
 CLEARING & GRUBBING 3.08 ACRES
 TREES & STUMPS 25 EACH
 EARTH EXCAVATION 4645 CU.YDS.
 SOLID ROCK 5091
 BORROW 264
 OVERHAUL 620 YD. STA.



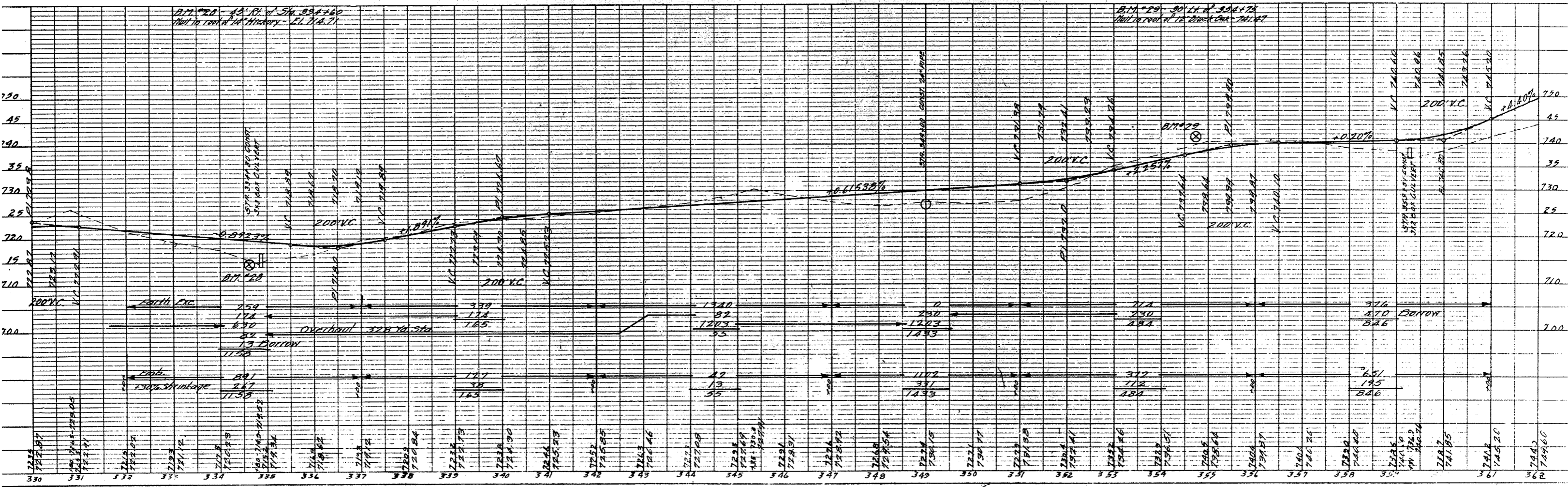


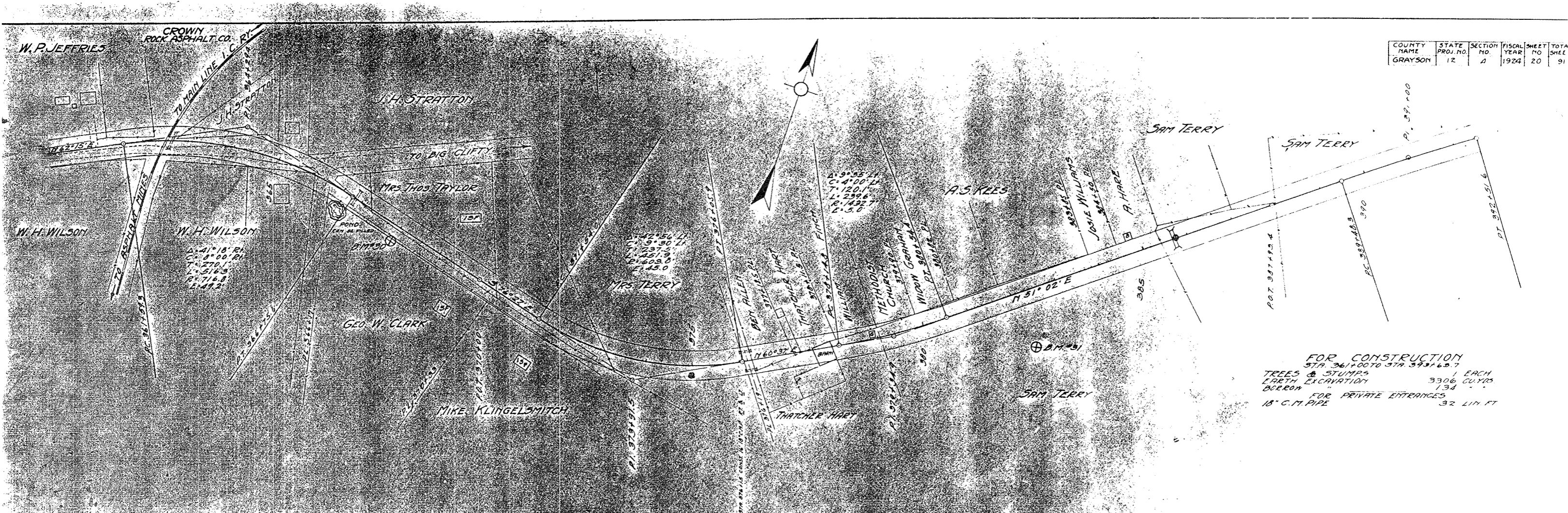
FOR CONSTRUCTION
 STA. 301+00 TO STA. 332+00
 TREES & STUMPS EACH
 EARTH EXCAVATION 3186 CUYDS.
 OVERHAUL 934 YD. STA.
 FOR PRIVATE ENTRANCES
 18" C.M. PIPE 24 LIN. FT.



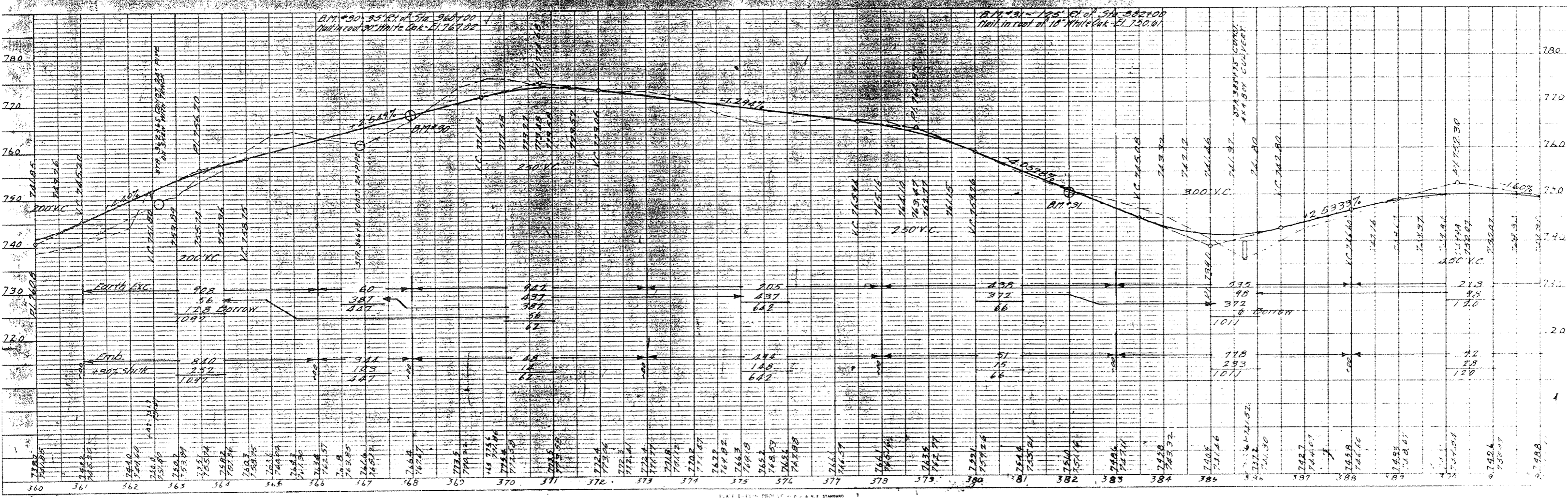


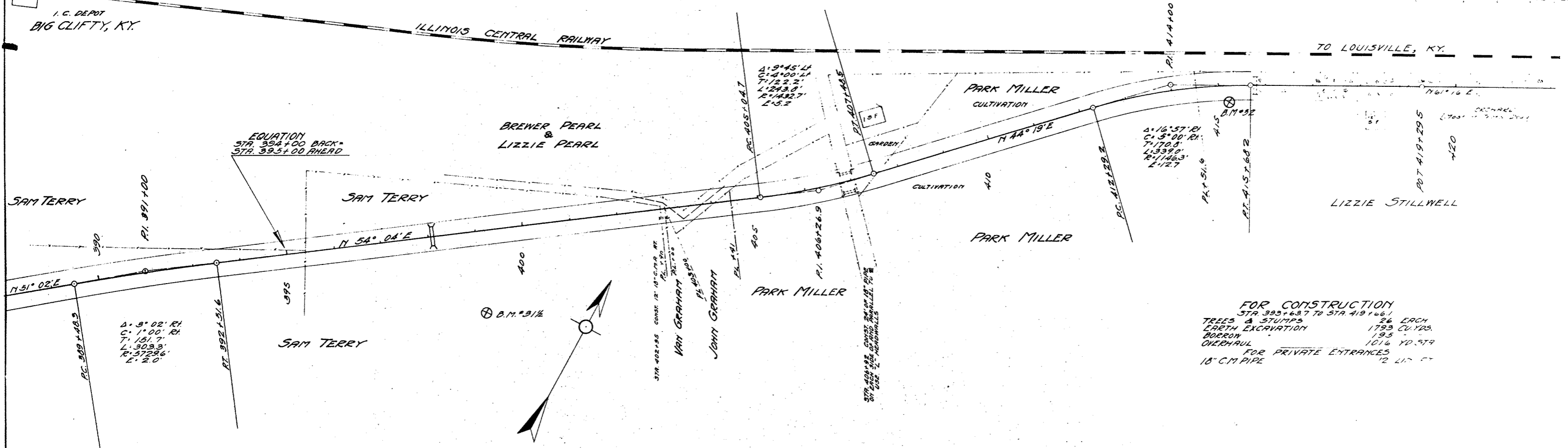
FOR CONSTRUCTION
 STA. 332+00 TO STA. 361+00
 TREES & STUMPS 2 EACH
 EARTH EXCAVATION 3028 CU. YDS
 BORROW 485
 OVERHAUL 328 YD. STA.
 FOR PRIVATE ENTRANCES
 18" C.M. PIPE 30 LIN. FT.



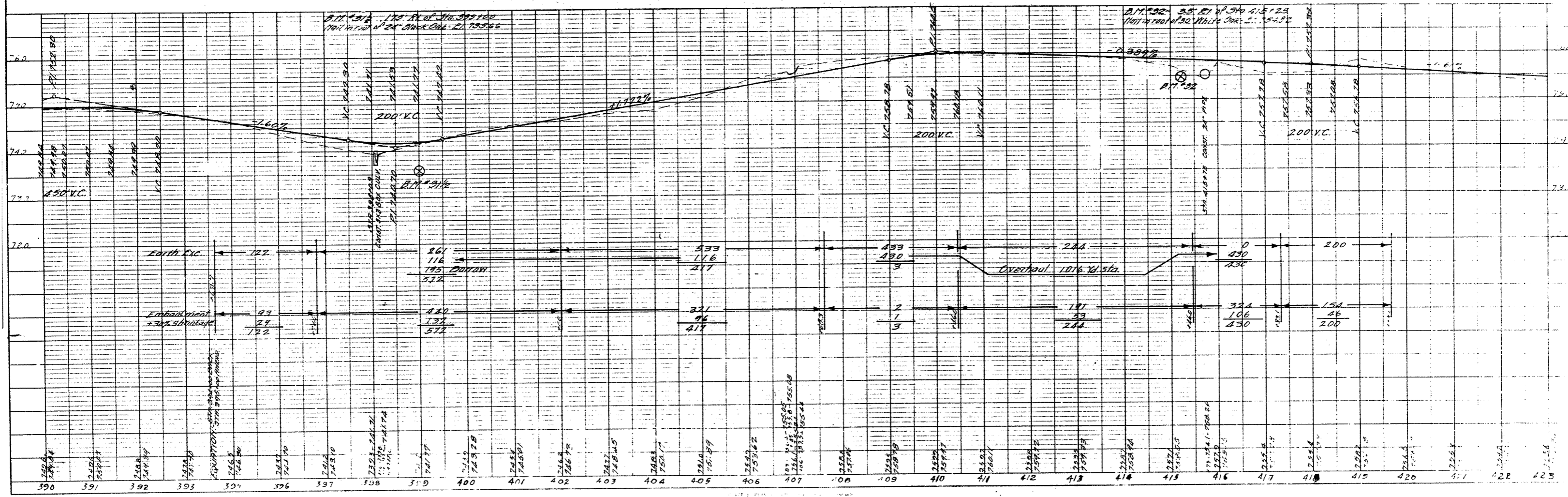


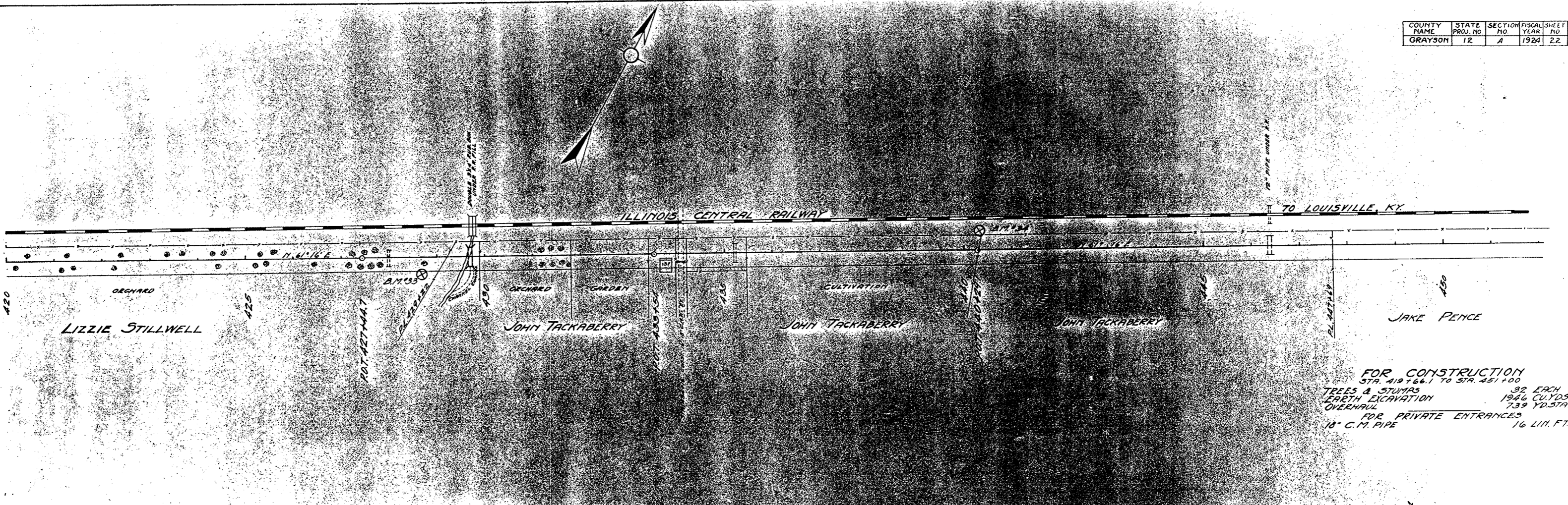
FOR CONSTRUCTION
 STA. 361+00 TO STA. 393+69.7
 TREES & STUMPS 1 EACH
 EARTH EXCAVATION 3306 CU. YDS
 BORROW 134
 FOR PRIVATE ENTRANCES 32 LIN. FT.
 18" C.M. PIPE





FOR CONSTRUCTION
 STA. 393+63.7 TO STA. 419+66.1
 TREES & STUMPS 26 EACH
 EARTH EXCAVATION 1793 CU. YDS.
 BOERON 195
 OVERHAUL 1016 YD. STA.
 FOR PRIVATE ENTRANCES 12 L.I. FT
 18" C.M. PIPE



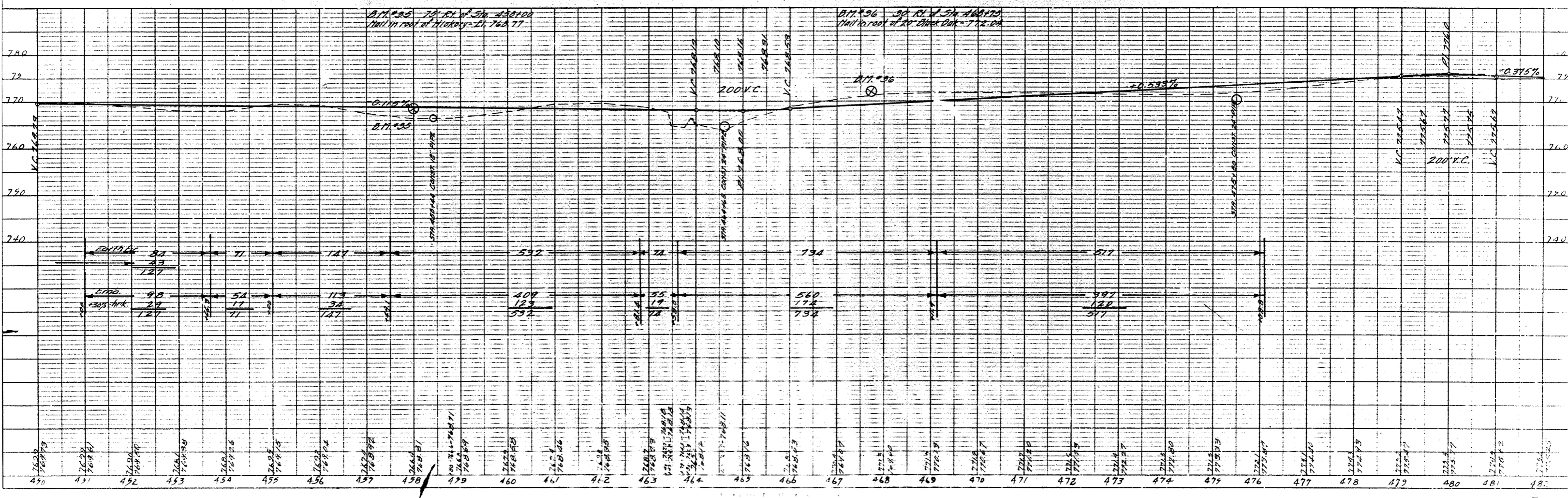
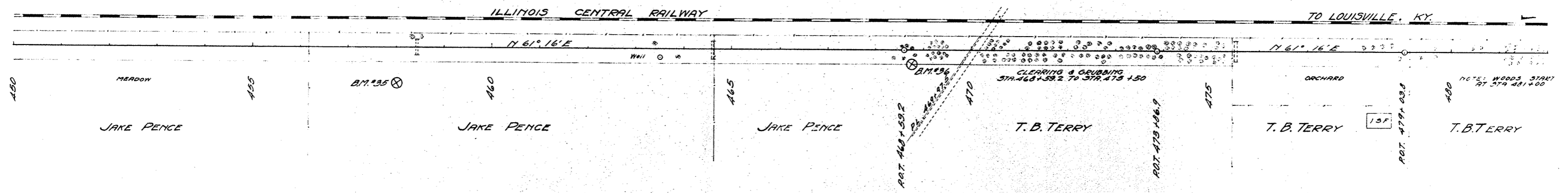
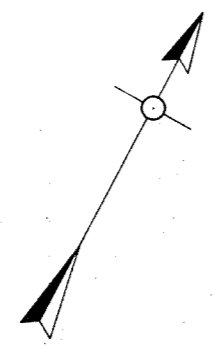


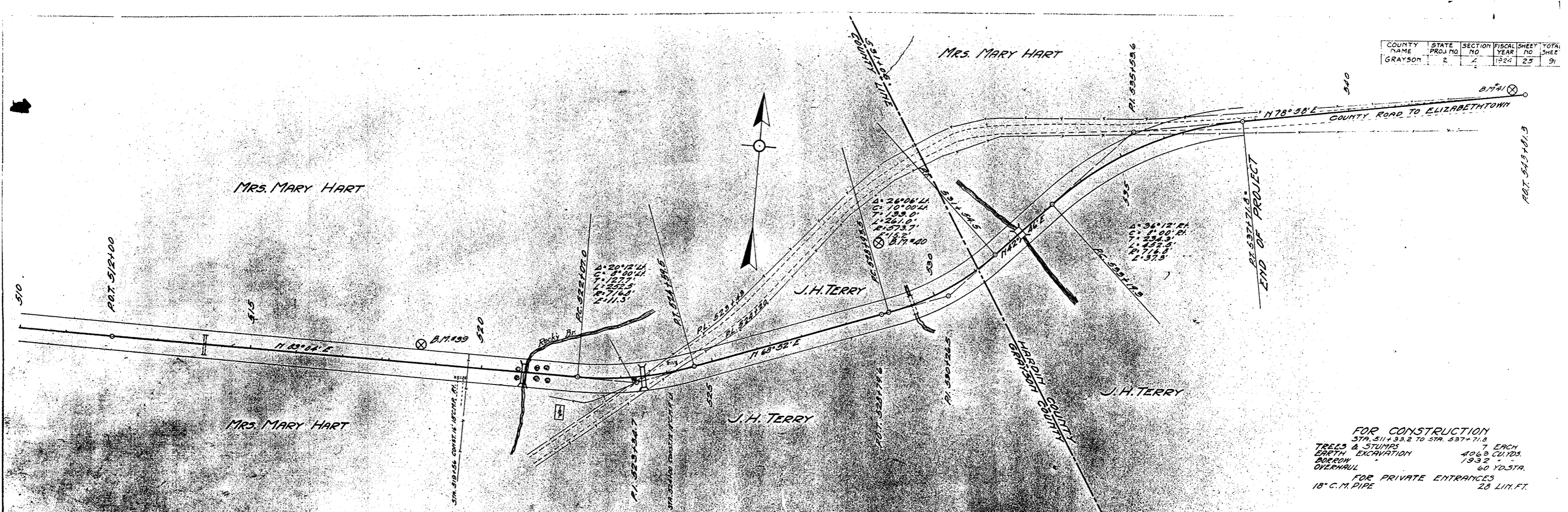
FOR CONSTRUCTION
 STA. 419+66.1 TO STA. 451+00
 TREES & STUMPS 32 EACH
 EARTH EXCAVATION 1946 CU.YDS.
 OVERHAUL 739 YD. STA.
 FOR PRIVATE ENTRANCES
 18" C.M. PIPE 16 LIN. FT.



COUNTY NAME	STATE	SECTION NO.	FISCAL YEAR	SHEET NO.	TOTAL SHEETS
GRAYSON	KY	12	1922	13	19

FOR CONSTRUCTION
 STA. 451+00 TO STA. 476+00.0
 CLEARING & GRUBBING 0.96 ACRES
 TREES & STUMPS 15 EACH
 EARTH EXCAVATION 2159 CU.YDS.





FOR CONSTRUCTION
 STA. 511+93.2 TO STA. 537+71.8
 TREES & STUMPS 7 EACH
 EARTH EXCAVATION 406.8 CU YDS.
 BORROW 1932
 OVERHAUL 60 YD STA.
 FOR PRIVATE ENTRANCES
 18" C.M. PIPE 20 LIN. FT.

